

Ideal for transitional or contemporary furniture, Phoenix is a matte finish, slightly corrected top grain leather. The hides are

P H O E N I X

drum dyed and plated to define surface grain.

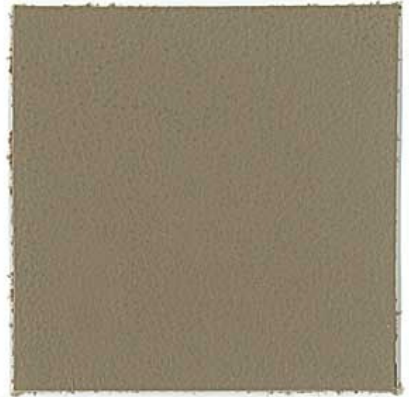
A light coat with pigment is added for overall color consistency.



Phoenix • Spade



Phoenix • Terra



Phoenix • Quarry



Phoenix • Currant



Phoenix • Bottle Green



Phoenix • Navy