

## Brazil



Periwinkle



Amber



Copper



Shiraz



Tar



Artichoke



Navy

## Grade 1

## Open House



Geranium



Angora



Pumpkin



Red Delicious



Coffee Bean



Cumin



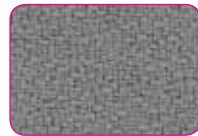
Green Apple



Mulberry



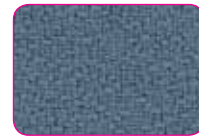
Aubergine



Asteroid



Wolf



Quarry Blue



Midnight



Goose



Fossil



Graphite



Onyx

## Grade 2

## Lisbon



Khaki



Gold



Ruby



Cocoa



Raisin



Kelly



Peacock



Stream



Navy

## Grade 3

## Icon



Cranberry



Taupe



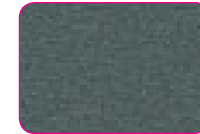
Burgundy



Vineyard



Navy



Grey



Black

## Grade 1

## Snakeskin



Candy



Butterscotch



Pumpkin



Cranberry



Midnight



Sage



Khaki



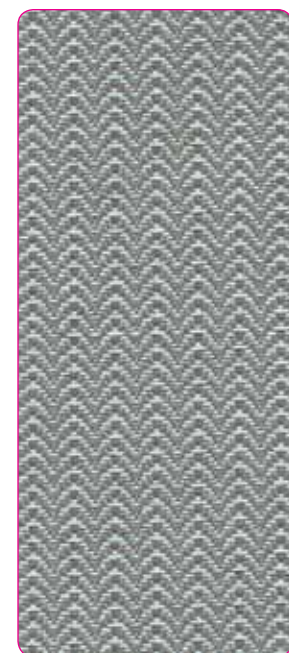
Chocolate



Charcoal

## Grade 2

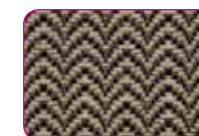
## Sockhop



Platinum



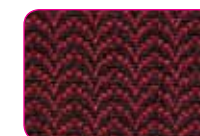
Rattan



Truffle



Pumpkin



Garnet



Bronze



Custard



Lawn



Pine



Pool



Cobalt



Regatta



Twilight



Silver Lining



Blue Moon



Carbon



Graphite

## Grade 3



# AMERICAN MADE FABRIC

## GRADES 1, 2 & 3

www.seatinginc.com



## Specifications

Pattern	Content & Backing	Weight/ Linear Yd	Pattern Repeat	Treatment	Abrasion Wyzenbeek	Light Fastness	Flammability
<b>Brazil</b> Supplier: Guilford of Maine	42% recycled polyester 58% polypropylene s.b.r. latex	8.9 oz.	1.375" V .9375" H	BLOCKaide®	30,000 double rubs	40 hrs. min.	Cal. Tech. 117-2013 Section 1 NFPA 260/UFAC - Class I
<b>Icon</b> Supplier: Absecon	100% recycled polyester no backing	11.5 oz.	None	acrylic with Teflon	400,000 double rubs	60 hrs.	Cal. Tech. 117 Sec. E NFPA 260/UFAC - Class I
<b>Lisbon</b> Supplier: Guilford of Maine	100% recycled polyester s.b.r. latex	10 oz.	4.5" V 4.5" H	BLOCKaide®	30,000 double rubs	40 hrs. min.	Cal. Tech. 117-2013 Section 1 NFPA 260/UFAC - Class I
<b>Open House*</b> Supplier: Guilford of Maine	65% pre-con. rec. polyester 35% post-con. rec. polyester no backing	13.1 oz.	none	none	250,000 double rubs	40 hrs. min.	Cal. Tech. 117-2013 Section 1 NFPA 260/UFAC - Class I
<b>Snakeskin*</b> Supplier: Guilford of Maine	100% recycled polyester no backing	10 oz.	13.5" V 13.5" H	Scotchgard™	60,000 double rubs	40 hrs. min.	Cal. Tech. 117-2013 Section 1 NFPA 260/UFAC - Class I
<b>Sockhop*</b> Supplier: Guilford of Maine	100% recycled polyester no backing	11 oz.	none	polyester binder	75,000 double rubs	40 hrs. min.	Cal. Tech. 117-2013 Section 1 NFPA 260/UFAC - Class I

Lisbon is shown railroaded. Application testing of these products is recommended. These are directional fabrics. Please do not use for shade master. Colors may vary between dye lots. Proudly woven in the USA supporting our local communities.

### Cleaning Code


Standard Care Label W-S. Clean with water based cleaning agents, foam or pure, water free solvents. Vacuuming or light brushing is recommended to prevent dust and soil buildup.


### Width

54"

For additional American made textiles by Guilford of Maine, visit [www.seatinginc.com](http://www.seatinginc.com).

Visit [www.guilfordofmaine.com](http://www.guilfordofmaine.com) or [www.absecon.com](http://www.absecon.com) for complete specs and samples.

\*  Terratex is a registered trademark of True Textiles, Inc. and designates fabrics that are made from 100% recycled or compostable material using increasingly sustainable manufacturing practices to produce a high quality product that is recyclable at the end of its useful life.

\*  CO<sub>2</sub> emissions from 100% of the electricity used by the manufacturer to produce this product have been measured and offset in accordance with The CarbonNeutral Protocol.



seating inc.

60 N State Street  
Nunda, New York 14517

800.468.2475  
[www.seatinginc.com](http://www.seatinginc.com)